

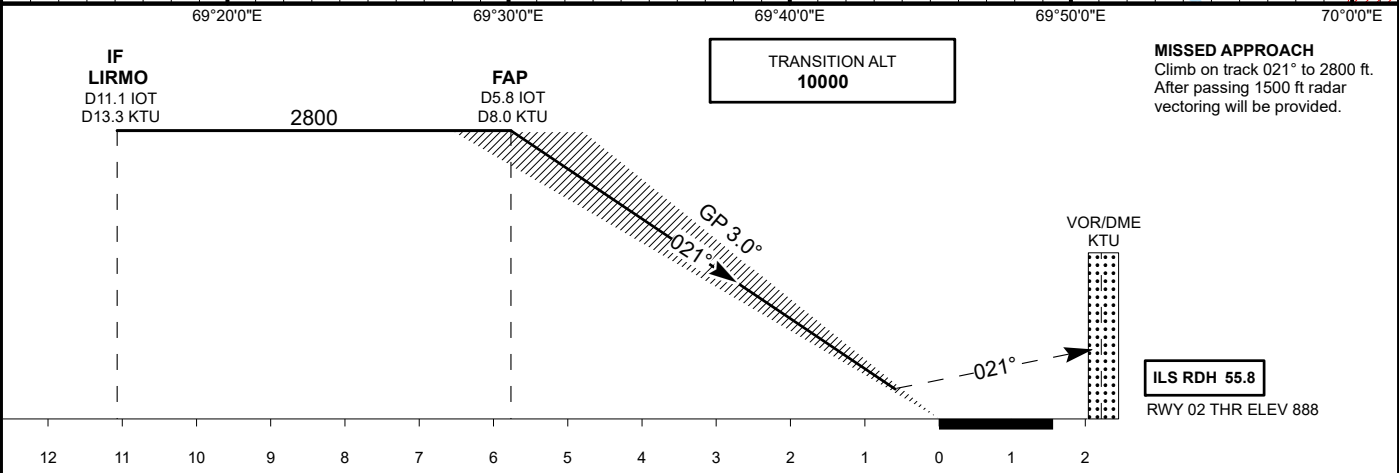
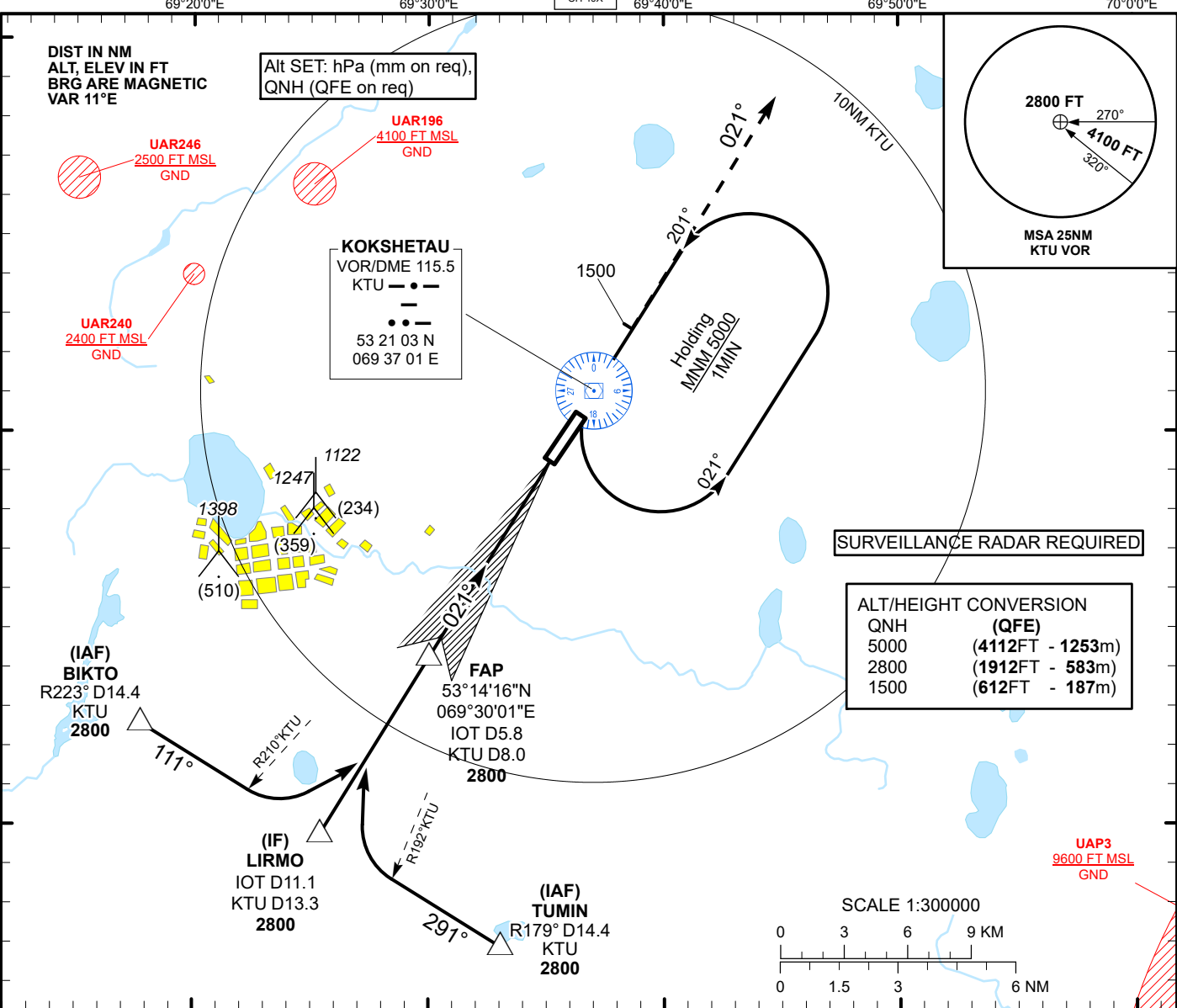
INSTRUMENT  
APPROACH  
CHART - ICAO

AERODROME ELEV 888 FT  
HEIGHTS RELATED TO  
THR RWY 02 ELEV 888 FT

ILS  
LLZ 110.3  
IOT ●●  
GP 335  
CH 40X

KOKSHETAU TOWER 127.9  
KOKSHETAU ATIS (EN) 134.9  
KOKSHETAU ATIS (RU) 126.0

KOKSHETAU  
ILS/DME  
RWY 02



Aircraft Category		A	B	C	D	THR - DME IOT	5.8	5	4	3	2	1	
Straight-in Approach OCA/H						DME KTU	8	7.2	6.2	5.2	4.2	3.2	
	CAT I	1088(200)	1088(200)	1088(200)	1097(209)	ALTITUDE	2800	2558	2231	1907	1584	1263	
						HEIGHT	(1912)	(1670)	(1343)	(1019)	(696)	(375)	
DME IOT ZERO RANGED TO THR RWY 02													
Aerodrome Operating Minima DH ft x RVR(CMV)	CAT I												
						GS	Kt	80	100	120	140	160	180
						Rate of descent	ft/min	420	530	630	740	840	950

KOKSHETAU  
ILS/DME

AERONAUTICAL DATA TABULATION

ILS approach to RWY 02 from LIRMO, BIKTO, TUMIN	
Fix/point	Coordinates
KTU VOR/DME	53° 21' 02,7"N 069° 37' 01,1"E
IOT D5.8 KTU D8.0 (FAP)	53° 14' 15,9"N 069° 30' 01,4"E
LIRMO (IF) KTU D13.3 IOT D11.1	53° 09' 45,3"N 069° 25' 23,7"E
BIKTO (IAF) R223°KTU D14.4KTU	53° 12' 35,5"N 069° 17' 45,4"E
TUMIN (IAF) R179°KTU D14.4KTU	53° 06' 54,7"N 069° 33' 01,00"E
THR RWY 02	53° 19' 09.85"N 069° 35' 04.28"E
IOT LOC	53° 20' 51.7"N 069° 36' 49.8"E